



FIG · GARDEN  
HOME · OWNERS  
ASSOCIATION

# SPRING NEWSLETTER 2017

[www.oldfig.org](http://www.oldfig.org)

## Annual Membership Meeting

Tuesday, March 28, 7:00pm  
**Fig Garden Swim and Racquet Club**  
**4722 N. Maroa Ave.**

Come to our annual meeting. Hear the news, meet neighbors, ask questions of County and City officials, and show that you are a part of Old Fig.

## PRESIDENT'S MESSAGE

*By Dan Gallagher*

### Our Tree Plan

Throughout the year, I see people from other parts of the city come to our neighborhood to walk, run, or cycle. One of the reasons that Fig Garden is a destination for many Fresnoans is our established urban forest. The mature trees of Old Fig are one of the many reasons our part of the city is so desirable. They offer us shade as well as beauty.

In 2012, as part of the Caltrans Grant study, Davey Tree did a tree inventory of our neighborhood, which can be found by clicking the link on our Oldfig.org website. It lists the tree species and their condition based on the street where they are located. The dry years since that inventory was done have been extremely hard on our trees, and with the recent storms we've lost even more of these important assets.

Fig Garden was developed by a man named J.C. Forkner. In 1919, he hired Horace Cotton, a landscape architect from San Francisco, to design the plantings that would line many streets of the Forkner-Giffen Tract. Each street would be planted with a common tree species. Over the years, many streets not part of Cotton's original plan were also planted with a common species.

The Home Owners Association has hired Susan Stiltz, a local expert, to use the 2012 inventory and finish the tree plan that was first laid out nearly one hundred years ago. This updated and extended Fig Garden Tree Plan can also be found at Oldfig.org. It lists trees that are suggested for every street in the neighborhood.



Silk oaks lining Holland Ave

Just to be clear, the FGHOA is not requiring anyone to plant a certain tree, but as having streets that are typically lined with the same species is part of our neighborhood's charm, we would like to encourage sticking to the original idea and design that was started back in 1919. The trees suggested are for plantings along your street. There is no requirement or suggestion for other areas of your lot. As a matter of fact, a variety of trees is good for the health of our urban forest.

If you are interested in planting the tree called out for your street by the Tree Plan, or if you're interested in replacing one, the FGHOA is teaming with Tree Fresno to get that done for you. We will arrange the necessary permits, bore a hole and get the tree planted. Your responsibility will be to pay for the tree and boring, and most importantly, care for the tree as it develops, i.e., providing a system to keep it watered. The cost for this service will be approximately \$200 per tree. There will be a link for this service on our website as well.



The colonnade of majestic eucalyptus trees lining Rialto makes you feel like you're walking along lined up elephants with gigantic feet planted along the way.

The care of trees on our lots is our responsibility, even if the tree is along the street in the county right of way. In many of our discussions with county staff about traffic issues, county staff points out that certain intersections have restricted visibility due to overgrown and unkempt landscaping. This is a safety hazard and the responsibility of the homeowner to take care of.

Please make sure that any of your trees or shrubs which are in a driver's line of sight are pruned. Besides making your home more beautiful and helping make drivers safe, pruning is also good for the health of the trees and shrubs.

Many of us lost trees this winter, and spring will be a good time to plant replacements. If you are planning on planting or replacing a downed tree along your street, please consider following the Tree Plan. Our urban forest is an asset that we need to continue to invest in, as it will help us build on and maintain our historic and desirable neighborhood.

NEWSLETTER

P.O. Box 5796, Fresno, California 93755 • [www.oldfig.org](http://www.oldfig.org) • March 2017

# Fig Garden 2016 Home Values and Sales

By Angie Hyatt

Our neighborhood remains a sought-after area of Fresno. Our beautiful trees, a different species lining each of our streets, enhance the value of our homes, as does the proximity to Fig Garden Village. But the main reason people want to live here are the homes; the character, charm, quality, lot sizes and so on...but all of you know that! There are many renovations occurring, which is an asset to our area, and also quite a few brand-new homes going up where older homes once stood, another testament to people wanting to live in Old Fig.

Old Fig Garden is a county island and borders are always in question, so I will break down the neighborhood into three areas. On the west side of the neighborhood the borders are Palm to Fruit and Shaw to Ashlan. The middle section is Shaw to Lansing (South of Lansing is the City of Fresno, except for Circle Drive, but it is still considered a part of expanded Old Fig up to the train tracks) and Palm to Maroa. (minus a small area of homes south of Griffith and east of Wishon to Maroa, which are in the City of Fresno, but again considered to be a part of expanded Old Fig.) The third section is Shaw to Ashlan

and Maroa to Blackstone. Below is a breakdown of sales in the areas I identified above.

During 2016 there were 81 home sales in the expanded Old Fig Garden Area. 2016 was a good real estate year for Fresno as a whole. Inventory has been low and interest rates have also remained low, which makes for increasing sales prices.

As always, in marketing a home the things that help in selling a home quickly and for the most money are the condition of the home and of course the pricing. A fresh coat of paint and sprucing up the landscaping are a plus. New bathrooms and kitchens play a huge role in pricing, as those two rooms are the most expensive to renovate and a buyer will usually pay more if those are updated.

**A few other statistics for the Old Fig Garden area as a whole:**

The highest price home sold was \$1,025,000.

The lowest home price was \$112,000.

The highest s.f. cost in Old Fig Garden was at \$272.10.

The lowest s.f. cost was \$85.22.

Homes sold for an average of 98.95% of their asking prices.

We live in a neighborhood where people take daily walks and stop to talk to their friends and neighbors. We are a close-knit community within a community. We are truly fortunate!

## 2016 FIG GARDEN HOME SALES STATISTICS

	# of Sales	Avg. Sales Price	Avg. Sq. Ft. Cost
Shaw to train tracks and Palm to Maroa	41	\$421,804	\$169.33
Shaw to Ashlan and Palm to Fruit	18	\$247,000	\$136.62
Shaw to Ashlan and Maroa to Blackstone	22	\$270,782	\$142.54

### FIG GARDEN HOME OWNERS ASSOCIATION OFFICERS & DIRECTORS FOR 2017

President	Dan Gallagher	dan.gallagher@fresnounified.org
Vice-President	Tony Pings	Anthony@pings.com
Treasurer	Valerie LeMay	vlemay@hotmail.com
Secretary	Merilee Amos	merilee.fghoa@gmail.com

#### Board of Directors:

Dean Alexander	dalex215@gmail.com
Jack Jensen	roy_jensen@comcast.net
Magda Gilewicz	mgilewicz@gmail.com
Angie Hyatt	angie@hyattre.com
Prudence Zalewski	pru@softsyn.net

#### Slate of Directors:

The Board of Directors nominates the following people  
for three-year terms on the Board:

(all are incumbents):

Magda Gilewicz, Angie Hyatt, Prudence Zalewski

# Mastering the Garden

By Magda Gilewicz



Just as Wishon forks into Wishon Court before it runs into Shaw, I spot a small gable-roofed library box on a post by the side of the road. Behind a framed glass door, two small shelves contain over forty books waiting for readers to claim—courtesy of the homeowner, Jim Sherrick. I take out *Mindfulness for Beginners: Reclaiming the Present Moment—and Your Life* by Jon Kabat-Zinn.

A peek into Jim's front yard tells me that reclaiming is what he's also doing. In the driveway, a huge pile of black humus, a smaller one of ripped out lawn, and, behind that, a yard in creative upheaval. The previous owners of 58 years left the yard bare of plantings. Now, in preparation for a Master Gardeners' tour at the end of April, the front and back are undergoing major reimagining and remaking.

A native of Fresno, Jim spent four years in the Bay Area designing indoor and outdoor spaces. (That's where he got the idea for a road-side box library). But four years in a big city was enough for Jim. "The traffic there is horrendous." He decided to return to Fresno and to Fig Garden, where he had previously lived for 12 years on Van Ness Avenue. Here is where he feels at home: within a five-minute walk to Fig Garden Village, a yard that's becoming both a piece of art and a botanical garden, and a house that he renovated to afford immediate connection to the outdoors and vistas he is now creating. He explains that in Japanese landscaping the front yard should conform to the surroundings but the backyard is *you*.

As a landscape architect, Jim designed his surroundings with a vision—a Zen vision. The yard already anchors a person in the present moment, with water shimmering in its seven fountains, and surprises at every turn as one follows the winding paths among big and small planters, encounters various faces and poses of Buddha in five statues, all facing the house, and forgets the proximity of Shaw Avenue, whose traffic noise is absorbed by greenery and the tranquility of a well-designed yard.

"Everybody should have a water feature in their yard," says Jim, who moved his bedroom to make it face the highlight of the property—a six-foot-deep koi pond with two small islands crowned by weeping trees and a gently cascading waterfall. The fish will be protected from predators by Jim's dog, Goliath, a friendly giant of a Leonberger breed, who supervises the construction. Bonsaied Japanese maples flank the pond: one of them a 150-year-old specimen acquired at the closing of Henderson's nursery; another, 70 years its junior.

Jim says he loves digging. He excavated the first three feet of the pond with a shovel but, running into hardpan, the rest had to be

done using a pick and a jackhammer. All this back-breaking labor with the goal of achieving beauty and serenity!

Spending an hour each morning working in the yard for Jim is therapeutic, it's his meditation. Later in the day he relaxes reading a book in a shady area flanked by two fountains. The care with which he envisions his outdoors includes also the sense of smell. He plants something fragrant by every door: banana leaves, gardenia, jasmine, "so when you come out you enter a different smell."

He educates his clients how to be water smart, treat plants without pesticides, and create healthy soil. On the side of his house, in one of six raised-bed planters he cultivates compost, mixing used coffee grounds from the nearby Starbucks with organic matter. The other beds are for vegetables and cut flowers. Another lesson he passes on is choosing the right plants for the climate and understanding how big they will grow, "Most people get rid of trees after 4-5 years, never allowing them to mature."

Big established trees frame the perimeter of his backyard, making it 15 to 20 degrees cooler during the summer. They do well watered only once every three weeks with a slow drip through the night. Jim ripped out 14 sprinklers and replaced them with drip irrigation. "Grass uses four times as much water as drip-irrigated plants, but over-watering, even on drip, is as much of an issue as not watering enough," instructs Jim.

I will return in April to see this yard ready for the Master Gardeners' tour. For now, touched by Jim's generosity, creativity and enthusiasm, I leave with a new book to read and dozens of ideas for my own neglected yard which, perhaps, with much help, one day, like Jim's, will be transformed into an inspired expression of *me*.



# Meet Your Police Protection District Deputies



Fresno County Sheriff's Deputies Garrett Majors (left) and Braithan Stoltenberg (center) are the new deputies assigned to the Fig Garden Police Protection District. They will be serving under the supervision of Area 2 Commander Lt. Kathy Curtice (right).

## Garrett Majors

I have lived in Fresno CA my entire 28 years of existence. I was raised by two loving parents and am sibling to an older brother, who is in law enforcement officer for the city of Madera.

I was home schooled during my elementary school years and then went to Clovis Christian school for junior high, where my mother got a part-time job. Between junior high and high school, I earned my first job as a bat boy for the Fresno Grizzlies baseball team. I then started at Bullard High School, where I played basketball for all 4 years and graduated in 2006. I continued my schooling at Fresno City College, where I completed some course work before putting school on hold to take care of my responsibilities as a father to my two beautiful girls. In 2011, I met my beautiful wife while working at Starbucks. It was love at first sight Carmel Macchiato. We have been married now for almost 4 years.

My desire to start in law enforcement started when I was a child. My grandfather was 32-year veteran of the CHP from which he retired as a Deputy Commissioner. My brother and I decided to follow in his footsteps and commit to serving our communities. I started my journey into law enforcement in 2015 when I went to the Fresno City College Police Academy. I graduated in July of that year and was hired by the Fresno County Sheriff's Office in August of that same year. I've been on Patrol since September of 2015 and was promoted to the Fig Garden Protection District in October of 2016. When I am not working, I enjoy spending time with my wife and kids, playing the drums for my church and being outdoors.

## Braithan Stoltenberg

I was born and raised in Fresno. I have spent most of my adult life, outside of my military service, here in Fresno. A little bit about me. I graduated from Buchanan High School in 2008 and spent the following two years at Fresno City College. After attending Fresno City I enlisted in the US Army. I spent six years in the Army serving our great nation.

Enlisting in the military changed my life. Fortunately for me, during that time I had several very positive mentors surrounding me, all of whom were in law enforcement. As I spent more time with them I became introduced to the law enforcement

culture and career. My life had always revolved around service. I saw working with the Fresno County Sheriff's Office as an exciting way to continue serving in a very unique way.

Becoming the day time contract deputy for the people of Old Fig Garden has been the highlight of my career. I love working for people who aren't afraid to support me and my partners. Working the Fig Garden contract has given me opportunities to not only protect genuinely good people, but to forge wonderful friendships as well. Being in the Garden daily has made me feel a part of this very special community, and I love it.

## Fig Garden Police Protection District *By Dean Alexander*

The Fig Garden Police Protection District, created in 1950, provides supplemental police protection for residents in the area located between Palm, Maroa, Lansing, and Shaw Avenues. The supplemental law enforcement services are paid for through a special assessment fee that is included within the covered residents' property taxes and consist of two full-time and one part-time Fresno County Sheriff's Deputies and one full-time security guard provided by Fresno County Private Security. These supplemental police protection services have made our neighborhood a safer place to live.

Our Fig Garden neighborhood is very active in the Neighborhood Watch Program. Observant neighbors help reduce crime. Report any suspicious activity to Fresno County Sheriff dispatch number: **559-600-3111**.

Last year we had vehicle break-ins. It is recommended that you keep all valuable and personal property out of your vehicles. Mail and parcel theft continued to occur last year. If possible, install a locked mail box and have parcels delivered when someone is home to accept them. Consideration should be given to an updated burglar alarm that includes video surveillance and electronic notifications. If you are going to be out of town for an extended period of time, please let your neighbors know and schedule a house watch with the Sheriff's Department by calling the dispatch.

With the passing of California Propositions 47 and 57, criminals will remain on the streets. Being proactive, observant and diligent regarding neighborhood safety will discourage these criminals from coming into our neighborhood. Our best defense is a responsible and active one.



*If you would like to receive email notifications about crime events in this area, send your email address to [FigGardenWatch@gmail.com](mailto:FigGardenWatch@gmail.com). You will receive time sensitive neighborhood crime alerts and monthly statistics compiled by the deputies on duty.*

# From County Supervisor Andreas Borgeas

Dear Fig Garden Friends,

It is an honor to serve as your representative on the Fresno County Board of Supervisors. Together with my Chief of Staff Sandra Seely and our new Constituent Relations and Communications Manager Brianna Padilla, we endeavor to provide the very best constituent services to the Fig Garden community.

## Update on Ashlan

As you know our highest priority is public safety so we've continued our efforts regarding Ashlan Avenue, working diligently with the Fig Garden HOA and County staff to find sustainable methods to calm traffic along the corridor in fulfillment of the CalTrans Transportation Study. You may recall the meeting we hosted in January where we presented our Draft Proposal on Traffic Mitigation and Public Safety Measures that included the construction of a median and a pedestrian crossing on Van Ness. We were pleased to have received unanimous support for the project from all those in attendance at the conclusion of the meeting. We are currently in the process of assembling a plan to begin assessing cost estimates. Ultimately our goal is to improve public safety by slowing traffic along Ashlan in ways that are code compliant, legally defensible and maintain the integrity of the Fig Garden community. As always we will keep you updated throughout the process and no final decisions will be made without your input.

## Update on Anti-Scavenging Pilot Program

We are in the one-year pilot period for the anti-scavenging program intended to make scavenging more difficult and decrease property and identity crimes. Law enforcement officials have expressed satisfaction in having the tools necessary to issue citations where appropriate. Additionally the Sheriff has authorized the creation of a new call type to be used in this pilot zone as it relates to suspicious activity involving scavenging. Since September, Dispatch has received at least nine calls related to scavenging activities that have resulted in calls for service. Thank you for your continued support for this program and we anticipate reporting back to the community on its effectiveness in the fall.

## New Member to District 2 Team

I would also like to take this opportunity to introduce you to the newest member of our District 2 team. Brianna Padilla has been selected to be our Constituent Relations and Communications Manager. She is responsible for working on constituent-related matters and you will likely see her representing me out in the community.

As always please feel free to contact me, Sandra Seely or Brianna Padilla by phone at 600-2000 or by email at [district2@co.fresno.ca.us](mailto:district2@co.fresno.ca.us) with any questions or concerns. We look forward to our continued partnership on all issues related to Fig Garden.

Warm Regards,  
*Andreas Borgeas*

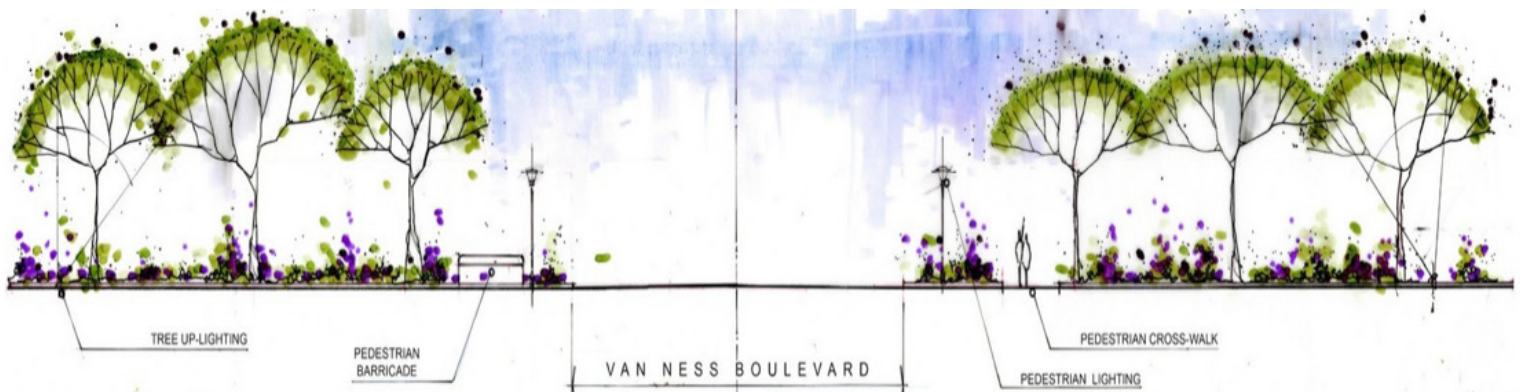
## Ashlan Avenue Update

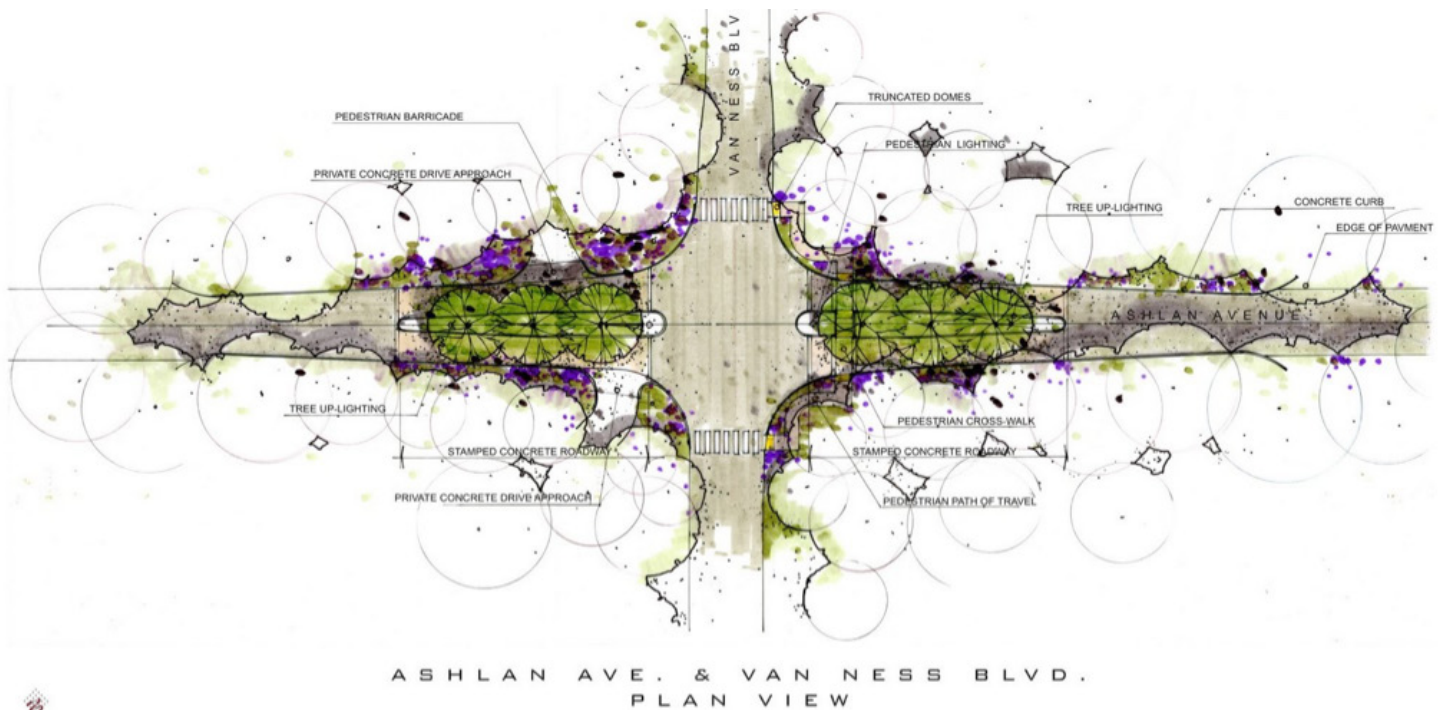
This has been an active year for planning within Fig Garden. Guided by the 2013 Caltrans study, we are working interactively with Supervisor Borgeas and the County on implementation. Ashlan Avenue is our first area of improvement, starting with the intersection of Van Ness and Ashlan Avenues. Design plans for this work have been developed and at this time are proceeding towards construction. The specifics of this effort, presented at a well-attended public meeting in January of 2017, are represented in the drawings.

Ashlan Avenue embodies the history of Old Fig Garden and lies at the heart of our area's health. If this street is allowed to

divide the neighborhood into two areas, a process we are already seeing the first signs of, our neighborhood will split, and we will lose the size necessary to maintain the viability of the "halves," both from a political and regulatory standpoint.

Today we are seeing the pressures on Ashlan Avenue as evident in the recent increase of the speed limit from 30 mph to 35 mph. This change is based on state law for how street speed limits are determined. The increase poses a serious threat to the unity of our area that was predicted and studied, with a solution designed as part of the Caltrans report.





Though relatively new to our County, the plan offers an effective traffic calming solution used in many communities. The design is complete and moving forward with the many necessary steps to become a reality. The County and the Fig Garden Home Owners Association are working interactively to bring this project to completion, and Supervisor Borgeas has taken the lead in bringing this traffic calming speed solution to Ashlan Avenue. Our overall master planning is for Ashlan Avenue from West to Blackstone.

The first study effort will be from Palm to Maroa, starting with the intersection at Van Ness & Ashlan. Additional intersections will likely require us to find grant funds, which we are committed to pursuing. Traffic calming will include adding an island, with the splitting and narrowing of the drive lanes at the intersections. Van Ness will remain a four-way intersection. The current intersection at Wishon, for safety reasons, will remain a right turn only, with a center island added and narrowed drive lanes. This is the likely solution that will also be applied to the Wilson intersection, as it has the same safety patterns and concerns as Wishon. All three intersections will have a protected pedestrian crossing, with a safety zone between lanes within the center island, and hopefully pedestrian warning lights. The Van Ness crossing will also be designed to provide greater protection during the Christmas Tree Lane nights, especially the walk nights.

These are productive and rewarding times in the efforts to maintain and protect the integrity of the Fig Garden area. While

the corrosive pressures on Fig Garden have never been greater, the cohesive relationship and shared vision with the County have never been better.

On a personal note, the current positive transformative effort with the County is the outcome I had hoped for. Today begins the realization of decades of effort. While there are many to thank, as each contributed tirelessly to this outcome, our Supervisor, Andreas Borgeas, and Development Director, Steve White, deserve the most credit. They are today's shepherds and custodians of these efforts for a transformation, which encompass a new collaborative focus on the importance of Fig Garden in the larger urban mix.



## Roadside Generosity

By Magda Gilewicz

We treasure our secluded yards and often wall ourselves off not only from traffic and peering passers-by but, inadvertently, from the community as well. We have our reasons—security and privacy, of course. But it is touching and inspiring to see new efforts to open ourselves up and give to the community in our area.

Richard Caglia placed a bench on the corner of his front

yard to provide seating for neighbors as a respite while walking, skating, or running along Wilson Avenue. When a tree fell in his yard, instead of chopping it up to burn or to stuff in his green bin, he constructed a bench. Not stopping at that, he added a light to illuminate the bench and the intersection. Sitting on his bench offers a new perspective on the intersection of Wilson and Sussex

and a moment of mindfulness if you step a bit off the road. The sound of an effervescing fountain he placed by the entry to his house enhances the serenity.



Jim Sherrick, on Wishon Court, and another resident, on Van Ness, had another idea to beckon their neighbors. They put up little kiosks by the street in front of their homes and filled them with books. Both of these “little free libraries,” as they are called, are stuffed with books for people to borrow or take. The idea is for neighbors to exchange books—as the sign on the Van Ness library box says: *Take One. Leave One.*

So, if your own book collection is overflowing its shelf space, or you have just read the best book and want to share the experience, or you know already whodunit in all your Nordic noir novels, share your books with other Fig Garden reading fiends. You'll be part of a world-wide trend that's sweeping through this country and even generated its own book by Alex Johnson: *Improbable Libraries: A Visual Journey to the World's Most Unusual Libraries* from University of Chicago Press.



If you want to install your own free little library kiosk, you can design it yourself, order a pre-fab, or get repurposing ideas from Johnson's book. You can also just borrow a book, go to Richard's bench and read the first chapter. Or, better yet, put up a bench *and* a mini library by your own house. We'll all look out for these so they stay safe.

## THANK YOU FOR SPONSORING OLD FIG!

Please join the Fig Garden Home Owners Association. We work to protect and strengthen our unique neighborhood. The dues are \$60/year. Please mail your check payable to:

**FGHOA**

**PO BOX 5796**

**Fresno CA 93755**

**or pay on our website: [www.oldfig.org](http://www.oldfig.org)**

Unlike most homeowners groups, our dues are voluntary and we depend on the generosity of our fellow neighbors. Dues money goes to pay fees associated with filing documents that protect the quality of life and integrity of the neighborhood, printing and mailing newsletters to keep you informed, and running the [www.oldfig.org](http://www.oldfig.org) web site.

# It's the Most Wonderful Time of the Year on Christmas Tree Lane

*By Dean Alexander*

Last year marked our 94th year decorating the Deodar Cedars with lights. I have been involved with Christmas Tree Lane over the past 26 years and have been in charge of the event for the past 14 years. During my tenure we have made improvements so our neighbors and visitors have a more enjoyable experience, such as the LED Christmas lights for the Deodar Cedars, a dedicated radio station (92.5 FM) for Christmas Tree Lane music, improved sound system, over 40 Christmas displays created by our high school students and teachers, large lighted displays donated by Southern California Edison, and, most importantly, the wonderful displays created by our neighbors along Van Ness Boulevard.

The success of Christmas Tree Lane can be attributed to the safety of the event. During the walk nights, over 50 law enforcement personnel patrol Christmas Tree Lane, and patrol cars block a majority of the intersections along Van Ness Boulevard. During the drive nights, significant traffic control is provided by the Fresno Police Department and the California Highway Patrol. A huge appreciation and “Thank You” go out to our law enforcement agencies: the Fresno Sheriff's Department, Fresno Police Department, and the California Highway Patrol.

Since I am in the laudatory mood, I would like to thank Shawn Caglia and his assistant Kyle Mahaffey, who help put up and take down the lights each year. Over the past 30 years, Shawn Caglia has performed an exceptional job in decorating our Deodar Cedars. The Women's Club truly contributes to the Christmas Tree Lane magic by donating cookies and drinks on the opening night. They accept donations for these treats and offer the collected money to Christmas Tree Lane. Gary Catron with Catron Construction allows us to store all the Christmas decorations within the old water tank adjacent to the Fig Garden Fire Station. Special thanks to Gary for allowing us to do this free of charge. Another special “Thank You” goes out to Boy Scout Troop #95, who for the past 20 years have provided scouts to collect donations during the drive nights. I would like to thank the Christmas Tree Lane Committee, which consists of the past Christmas Tree Lane Chairman Terry Cole and his wife Christy, who assist me every night in putting the donation booth up and taking it down. This is a huge time commitment which the Coles have done for the past 20 years. Also, for the past 20 years, Russ and Becky Lindquist have coordinated the volunteers who collect donations during the drive nights. Jan Booth and her assistant Judith Towers for the past 30 years have assisted in the daily counting of the donations collected during the Christmas Tree Lane event and I am very grateful for their help. Lastly, Lauri Leoni has coordinated the Lane Keepers (people responsible for turning the Christmas tree lights on and off) for over 15 years. These committee members provide the needed assistance to keep Christmas Tree Lane running year after year.

Christmas Tree Lane is a tradition for tens of thousands of Valley residents and our Fresno Metropolitan neighbors. The Fig

Garden residents are definitely inconvenienced for 3 weeks during the event. This inconvenience, however, has provided joy along with Christmas spirit and magic for at least 200,000 guests each year. It is definitely the best time of the year.

Last year the Christmas Tree Lane event was covered by the Fresno Bee, the TV network affiliates and Central Valley magazine. These news segments were all uplifting, encouraging viewers to share the spirit of Christmas.

Vendors on Christmas Tree Lane continue to be a safety concern. They approach traffic to sell their items which stops traffic flow and creates an unsafe condition. In addition, they intrude on the privacy of the Fig Garden residents. We have discussed the

vendor situation with law enforcement, and our permits indicate no vending is allowed during the Christmas Tree Lane event. To help ease the vendor problem, I asked if the Fig Garden Police Protection District could provide additional security services for the event. They hired a security guard from the Fresno County Private Security Company to patrol the event. The security patrol was effective in reducing the vending, and I have requested the same services for 2017.

I will end by saying that we live in a great neighborhood which is historic and prestigious. I am proud to be your neighbor. We are planning a great Christmas Tree Lane event for 2017. Let's all enjoy the spirit of Christmas again!

## **MARK YOUR CALENDARS**

### **◆ Fig Garden Woman's Club Annual Antique Show and Sale**

***March 10-12***

4550 N. Van Ness Blvd

**Friday, Saturday  
Sunday**

**10 am-6 pm  
11 am-3 pm**

---

### **◆ FGHOA Annual Meeting**

***Tuesday, March 28***

Fig Garden Swim and Racquet Club

**7:00 p.m.**

---

### **◆ FGHOA Fall Dinner**

***Sunday, October 1***

**Details will be announced  
in our Fall Newsletter  
and on the [www.oldfig.org](http://www.oldfig.org) website**

## **Useful Contact Numbers**

Sheriff's Dispatch:	600-3111 (for emergencies call 911)
Fresno Humane Animal Services:	600-7387 (PETS)
Fresno County Code Enforcement:	600-4550
24-Hour Domestic Violence Help:	233-4357 (HELP)
Building Permit Info:	600-4540
City of Fresno Water Division:	621-5300, 621-5480
Fig Garden Fire Station (non-emergency):	621-4320 (for emergencies call 911)
Fresno County Library Information:	600-7323 (READ)
Fresno County Public Health:	600-3200, 600-6449
Graffiti Abatement:	600-8107
Fresno County Road Maintenance:	600-4840